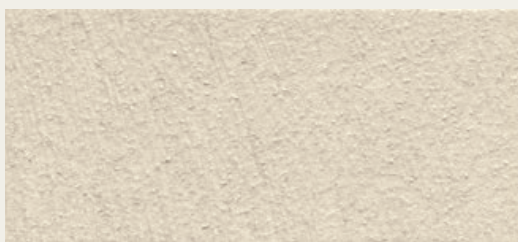


novacolor®  
I colori dell'Architettura

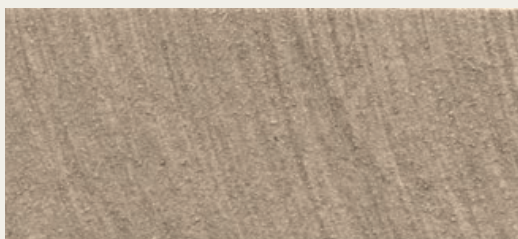
# Antiche Patine

Velature per interni ed esterni  
Color washes for interiors and exteriors

[novacolor.it](http://novacolor.it)



FASE SILOSSANICA 6200



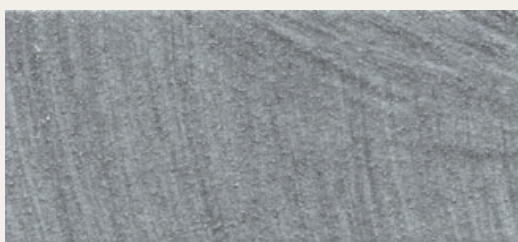
FASE SILOSSANICA 6201



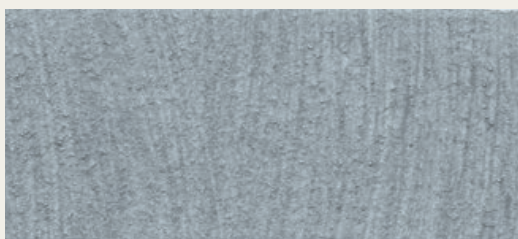
FASE SILOSSANICA 6202



FASE SILOSSANICA 6203



FASE SILOSSANICA 6204



FASE SILOSSANICA 6205



FASE SILOSSANICA 6206



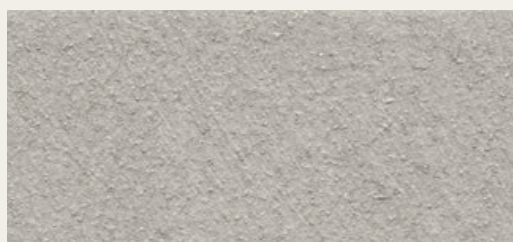
FASE SILOSSANICA 6207



FASE SILOSSANICA 6208



FASE SILOSSANICA 6209



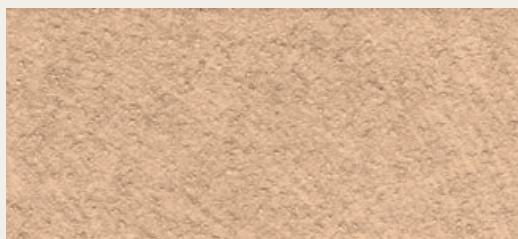
FASE SILOSSANICA 6210



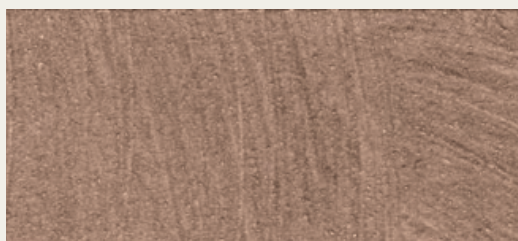
FASE SILOSSANICA 6211



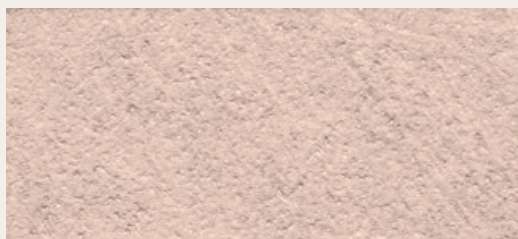
FASE SILOSSANICA 6212



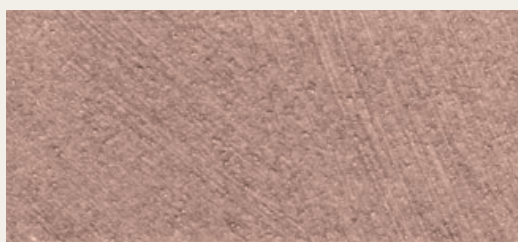
FASE SILOSSANICA 6213



FASE SILOSSANICA 6214



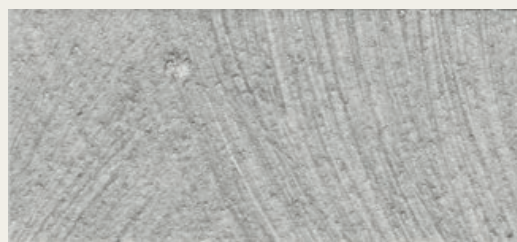
FASE SILOSSANICA 6215



FASE SILOSSANICA 6216



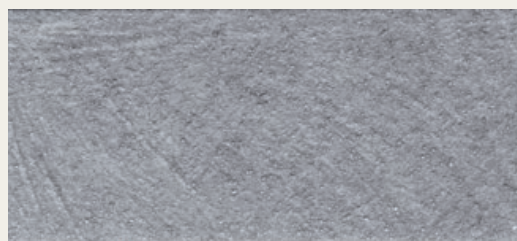
FASE SILOSSANICA 6217



FASE SILOSSANICA 6218



FASE SILOSSANICA 6219



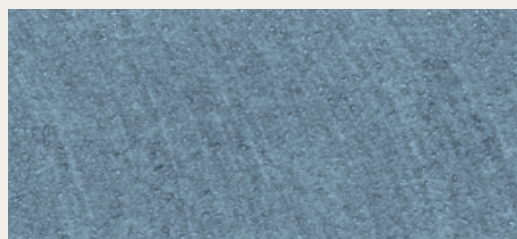
FASE SILOSSANICA 6220



FASE SILOSSANICA 6221



FASE SILOSSANICA 6222



FASE SILOSSANICA 6223

## IT. Antiche Patine offre una gamma di velature per interni ed esterni.

### FASE SILOSSANICA

Veicolo silossanico per velature in interni ed esterni.

Diluire con massimo 100% di acqua. Applicare in uno o due strati con pennello, spugna o con guanto di pelo.

Resa: 12-15 m<sup>2</sup>/l nei due strati.

Per maggiori informazioni consultare la scheda tecnica.

### PATINA MINERALE

Velatura ai silicati per supporti minerali in interni ed esterni

Diluire con massimo 20% di acqua. Applicare in uno o due strati con pennello, spugna o con guanto di pelo.

Resa: 4-8 m<sup>2</sup>/l nei due strati.

Per maggiori informazioni consultare la scheda tecnica.

## EN. Antiche Patine offers a full range of color washes for interiors and exteriors.

### FASE SILOSSANICA

Siloxane color wash for interiors and exteriors.

Dilute with 100% of water max. Apply one or two layers with brush, sponge or glove.

Yield: 12-15 m<sup>2</sup>/l in two layers.

For more information please check the technical data sheet.

### PATINA MINERALE

Silicate color wash for mineral substrates in interiors and exteriors.

Dilute with 20% of water max. Apply one or two layers with brush, sponge or glove.

Yield: 4-8 m<sup>2</sup>/l in two layers.

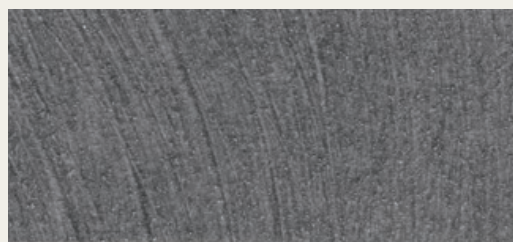
For more information please check the technical data sheet.

IT. Fase Silossanica e Patina Minerale sono qui applicate sul prodotto Puro\_VOC free.

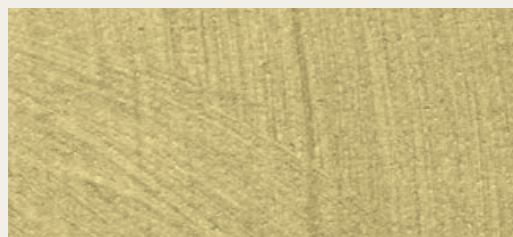
EN. Fase Silossanica and Patina Minerale are here applied on the product Puro\_VOC free.

FR. Fase Silossanica et Patina Minerale sont ici appliqués sur le produit Puro\_VOC free.

DE. Fase Silossanica und Patina Minerale werden hier auf das Produkt Puro\_VOC free aufgetragen.



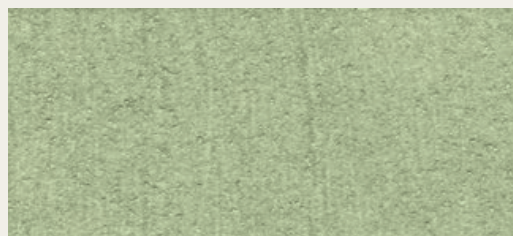
FASE SILOSSANICA 6224



FASE SILOSSANICA 6225



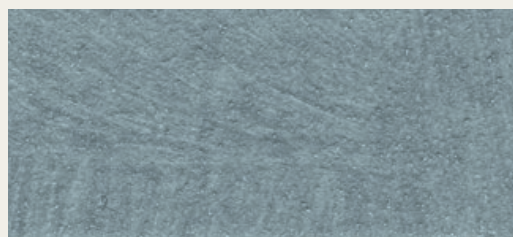
FASE SILOSSANICA 6226



FASE SILOSSANICA 6227



FASE SILOSSANICA 6228



PATINA MINERALE 6228



ANTICHE PATINE - THE LOFT HOUSE  
MUJAHID FARMS AND STABLES, PAKISTAN  
Project: Khyyam Ikram Design/Build e Umer and Hasnain Architects  
Partner: Innovators

---

**FR. Antiche Patine offre une gamme de lasures pour intérieurs et extérieurs.**

#### **FASE SILOSSANICA**

Lasure siloxane pour application en intérieurs et extérieurs.

Diluer avec au maximum 100% d'eau. Appliquer une ou deux couches avec une brosse, une éponge ou un gant à poil. Rendement: 12-15 m<sup>2</sup>/l en deux couches.

Pour plus de renseignement, merci de consulter la fiche technique.

#### **PATINA MINERALE**

Lasure aux silicates pour supports minéraux en intérieurs et extérieurs.

Diluer avec au maximum 20% d'eau. Appliquer une ou deux couches avec une brosse, une éponge ou un gant à poil. Rendement: 4-8 m<sup>2</sup>/l en deux couches.

Pour plus de renseignement, merci de consulter la fiche technique.

**DE. Antiche Patine bietet lazur-technik im innen und aussen-bereich.**

#### **FASE SILOSSANICA**

Siloxan-Bindemittel für Lazur-Technick im Innen und Aussen-Bereich.

Verdünnung mit Wasser bis zu 100%. In ein oder zwei Schichten mit einem Pinsel, Schwamm oder mit Haarhandschuh auftragen. Ergiebigkeit: 12-15 m<sup>2</sup>/l in zwei Schichten.

Weitere Informationen finden Sie im technischen Datenblatt.

#### **PATINA MINERALE**

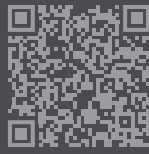
Silicat-lazur für mineralische Oberflächen im Innen- und Außen.

Mit maximal 20% Wasser verdünnen. In ein oder zwei Schichten mit einem Pinsel, Schwamm oder mit Haarhandschuh auftragen. Ergiebigkeit: 4-8 m<sup>2</sup>/l in zwei Schichten.

Weitere Informationen finden Sie im technischen Datenblatt.

---





## ANTICHE PATINE



Certificato A+ per le basse emissioni di sostanze volatili nell'aria.

A+ Certified for the low emissions of volatile substances in the air.



Riduce il carbon footprint. Certificato REDcert 2.

Reduce the carbon footprint. REDcert 2 Certified.



Senza formaldeide aggiunta.  
Without added formaldehyde.

Le tonalità di questa cartella hanno valore puramente indicativo. The color samples in this color chart should be considered purely indicative.

# novacolor®

I colori dell'Architettura

Novacolor Back office:

Via U. Aldrovandi 10, 47122 Forlì (FC)

Tel +39 0543 401840 – info@novacolor.it



Novacolor is committed to reduce the environmental impact by producing friendly materials.



Made in Italy